

VILLAGE LINKS

The Quarterley Newsletter Formerly Known As 'Gossip On The Green'

Local News for Lostock Green and Lach Dennis

FEBRUARY 2016

Printed by Simon Roberts: www.simon-roberts.com

News Items : 01606 47539 rostodhunter@aol.com
Adverts: 01606 43772 margaretweedall@hotmail.co.uk

Produced and Distributed Free by Volunteers

Lach Dennis Parish Council

CWAC Councillor Mark Stocks

Supported By Adverts and Donations From:

Local Businesses

Local Residents

Road Safety - Views Sought On Flashing Speed Sign

The 30mph flashing speed sign that has been installed at the end of Birches Lane near to the A556 bypass has not been working correctly and there is also a general opinion that it is not in the ideal position to be effective.



**Have You Spotted the Flashing speed sign?
Has it flashed for you?**

Several Lostock Green residents attended a site meeting with representatives from Cheshire West and Cheshire Highways Department to discuss moving the sign to a different, more appropriate location and also to investigate the possibility of getting another sign to target traffic coming into the 30 mph zone from the other end of the village.

Before anything is decided, and to make sure the right action is taken, the Highways Dept. representatives advised that input from residents should be invited to get a wider consensus on the best placement for the existing sign and also siting of the potential additional sign.

**If you have views on this matter
please email your comments to:
birchgrovehomewatch@hotmail.co.uk**

B. G. Phillips

LANDSCAPE & MAINTENANCE ONE OFF GARDEN TIDY TO WEEKLY VISITS

Design	Lawn Mowing
Turfing	Strimming
Drainage	Planting
Fencing	Weed Spraying
Decking	Weeding & Hoeing
Raised Borders	Tree Pruning & Felling
Fertilizer Application	Hedge Cutting
Paths & Patios	Patio Cleaning
Water Features & Shed & Gazebo Installation	

Bryan Phillips

07960990003

bryan.g.phillips@hotmail.com



Celebrant Services conducted by Rosemarie Teece
Funerals
Weddings and Civil Ceremonies
Renewal of Wedding Vows
Baby Naming
Speech Writing
Tel: 01606 350062



Logs

Seasoned hardwoods

Will deliver ton bags
or bulk load

Call for prices!

**01606
350062**

Announcements & Community Notices

No Charge for Local Residents for Announcements, Notices, Private Ads



Congrats To Daniel We Wish You Success in Your New Appointment

Daniel Head, son of Rosemary Head and the late Michael Head, has been appointed an equity Partner at professional services firm KPMG UK LLP in Manchester. Daniel attended Rudheath High School and Sir John Deane's College in Northwich before joining Baker Tilly in Manchester in 1994 and then KPMG in 1999.

Help Wanted

Reliable daily help required, easily run bungalow in the Lostock Green area. Four hours per week. References required, please telephone 01606 42391

Farewell and Fond Memories

Hazel Cooke, a well-known local Lostock Green and Lach Dennis resident passed away in January. Many villagers will remember her when she lived in Penny's Lane before moving to Greenside Drive and latterly in a care home.

She was very active in both villages, setting quizzes at Lach Dennis Village Hall and was a stalwart running the plant stall at Lostock Green Fete for many years. Gardening was one her specialities. She has travelled a lot, visiting far flung parts of the world including remote Pacific islands. Hers was always a friendly face in the villages, joining in with local activities and events.



You'll be missed Hazel. Our kind thoughts and sympathy go to Hazel's family.



CLLR MARK STOCKS
Shakerley Ward

How to contact Mark Stocks

Cllr Mark Stocks, c/o Tatton Conservatives,
Conservative Office, Manchester Road, Knutsford,
WA16 0LT Tel: 07470 118378
mark.stocks@cheshirewestandchester.gov.uk

LOSTOCK GREEN LADIES

An informal bunch of local and nearby ladies who meet up once a month. Usually the last Friday of the month. Sometimes just for a drink and a chat, Or a meal, a quiz and trips to see our local amateur dramatic group Performing at Plumley Village Hall.

Friday 26th Feb Quiz & Hot Pot Supper

Macmillan Cancer Support Heyrose Golf Club WA16 0HZ

Tickets £10.00 Available from D Breeze Tel: 01606 44445 Email: jdbreeze@btinternet.com

Friday 1st April Bring A Bottle Wine Tasting

Birch Grove Lostock Green

All Local and Nearby Ladies Are Welcomed To Join Us

And even local gents and friends and families for the quiz on 26th Feb

More info from: rostodhunter@aol.com tel 01606 47539

JUMBLE SALE

Village Rooms

Lostock Green Methodist Church

Sat 2nd April



1.00 pm

Refreshments

Donations Wanted

Please drop them off at 39 Birches Lane

NOW

At Church morning of Jumble Sale from 10.00am

Want more info? Tel 01565 734029



WE ARE
MACMILLAN.
CANCER SUPPORT

HELP IMPROVE THE LIVES OF PEOPLE AFFECTED BY CANCER

Vale Royal Fund Raising Group

JOIN YOUR
LOCAL QUIZ EVENT
Same Questions **NATIONALLY** Same Night

Hot Pot Supper & Quiz Friday 26th February 7.00 pm

Heyrose Golf Club Budworth Road Tabley WA16 0HZ

Tickets £10.00 (to include supper and quiz)

Available from

D Breeze 01606 44445
jdbreeze@btinternet.com

DOG OF THE MONTH ~ Holly our Valentine's Heart Throb



Kate and Sarah are delighted to welcome Holly to Lostock Green, she's a working cocker spaniel therefore full of bounce and they apologise in advance for any disruption when out walking whilst training is in force!

Most of you will know they sadly lost Oscar last year who was well loved by all who knew him (except the postman)!

Here's a stunning shot of Holly out in the local wintry landscape on a cool and atmospheric walk!

DOG DAYS Cannine Comments On Local Life

© Bill Stott



[Find me on Facebook](#)



Mucky Paws

Dog Grooming Salon

15 Moorcroft, Plumley. WA16 0UW

Jenn Riding

07920 400185

BIRD WATCHING IN LOSTOCK GREEN by Ann of Birch Grove



It was a surprise and delight that a back garden and patio in Birch Grove was visited by a flock of **14 Red-legged Partridge** on Saturday 23rd January. During January the same garden has been host to a Pheasant, **Great Spotted Woodpecker**, **Chaffinch**, **Goldfinch**, **Sparrow** and **Sparrow Hawk**, **Blackbird**, **Starling**, **Collared Dove**, **Crow**, **Pigeon**, **Magpie**, **Robin**, **Blue Tit**, **Great Tit**, **Wren**, **Pied Wagtail**. It would be interesting to know what other birds species have been spotted in the village so far this year. Contact *Village Links* with your bird sightings.

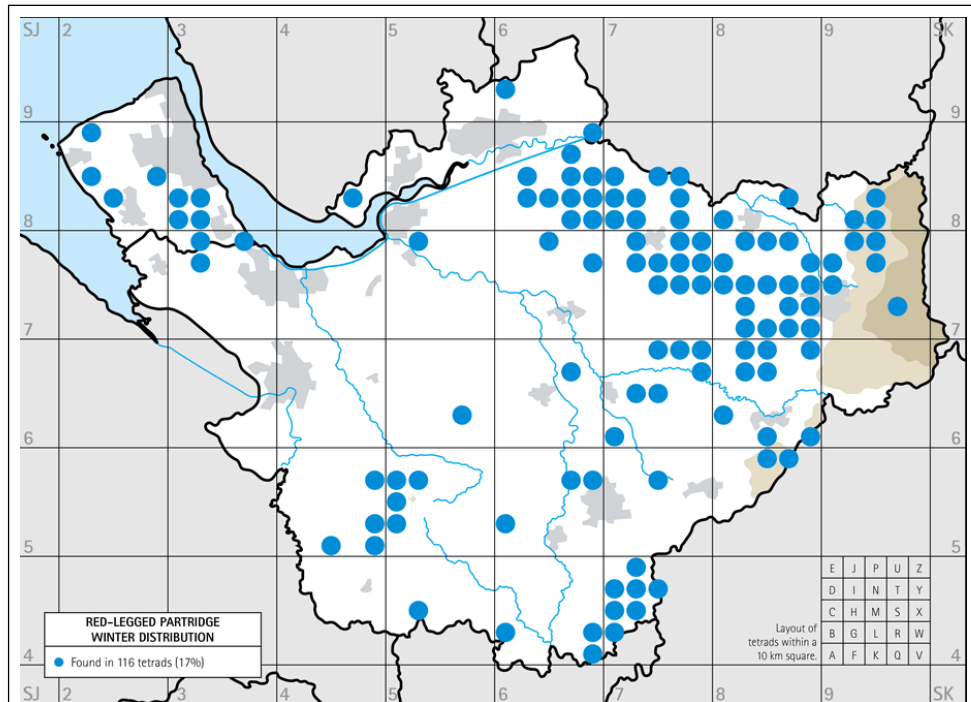
The Cheshire and Wirral Ornithological Society Bird Atlas

give details about the **Red-legged Partridge**. In Lostock Green and Lach Dennis we are on the edge of its range in both the UK & Cheshire.

'This species was introduced to England in the 18th century from its native southern Europe.... their loud calls are said to resemble small steam-engines

They gather into flocks for the winter, but they normally stay together as family groups, typically two to five adults and their young

Their winter diet is much the same as that of Grey Partridge, mainly seeds of grain and weeds'



Copyright © 2008 David Norman on behalf of Cheshire and Wirral Ornithological Society Registered charity number 702484.

Ted Lock CAWOS secretary says *'about 40 years ago I used to go with a friend of mine and count the curlew coming into roost on the Lostock settlement beds in winter, some we ringed and colour marked and a few were sighted in Holland. At its peak there was well over 1000 birds coming in off the fields around the area for a safe haven at night.'*

PARTRIDGE COOKING TIPS And for the food lovers amongst us the **Red-legged Partridge** is a game bird. Slightly larger than our native grey partridge with a milder taste. All partridges should be hung for a few days before cooking to improve the gamey taste.

MRS BEETON'S PARTRIDGE PIE Why not try out Mrs Beeton's recipe from 1861. For more partridge recipes check out <http://www.mrsbeeton.com/23-chapter23.html>

INGREDIENTS – 3 partridges, pepper and salt to taste, 1 teaspoonful of minced parsley (when obtainable, a few mushrooms), 3/4 lb. of veal cutlet, a slice of ham, 1/2 pint of stock, puff paste.

Mode.—Line a pie-dish with a veal cutlet; over that place a slice of ham and a seasoning of pepper and salt. Pluck, draw, and wipe the partridges; cut off the legs at the first joint, and season them inside with pepper, salt, minced parsley, and a small piece of butter; place them in the dish, and pour over the stock; line the edges of the dish with puff paste, cover with the same, brush it over with the yolk of an egg, and bake for 3/4 to 1 hour.

Time.—3/4 to 1 hour. **Average cost**, 1s. 6d. to 2s. a brace. (1861 prices)

Sufficient for 4 or 5 persons.

Seasonable from the 1st of September to the beginning of February.

Note.—Should the partridges be very large, split them in half; they will then lie in the dish more compactly. When at hand, a few mushrooms should always be added.

The Duke of Portland Our Local Village Pub

NEW YEAR NEW MENU NEW IDEAS

from the **NEW MANAGEMENT** at The Dukes led by Mark Huntly, who lives locally and has previously worked at the Fox and Hounds in Sproston, Nunsmere Hall and Hotel Du Vin. He is delighted that the Duke of Portland pub has reopened and thanks the local folk for their friendly welcome and patronage.



**And the locals say 'It's brilliant' 'Nice to see it as a village pub' 'Amazing, great'.
Lostock Green Ladies met there at the end of January and gave it the thumbs up too.**

The Duke's friendly village atmosphere includes its 10 to 12 local staff and a familiar face, Head Chef Dave Leese, who worked at The Dukes 8 years ago and since has plied his skills at The Lord Binning in Kelsall and The Old Sessions House in Knutsford.

D of P manager Mark says there are development plans for the future, making the pub a focal point for the village providing a welcoming venue, good wholesome reasonably priced pub food ranging from *Local Cheshire Bangers n' Mash* to *Shetland Mussels*. On Friday and Saturday evenings there is live music. And the Hay Barn is available to hire for all events from Weddings to Wakes, Family Gatherings to Birthday Parties.

Check out back cover of Village Links for a 20% off meal deal in Feb and March

Forthcoming Special Events at the Duke of Portland include:

Mother's Day lunch on Sunday 6th March

Royal Ascot Ladies Day 16th June lunch, high tea and best dressed lady & gent competition

Local Mushroom Hunt and Sunday Lunch 30th October

LACH DENNIS PARISH COUNCIL

(Includes Lostock Green)

www.lachdennis.com/parish-council Email: lachdennis@tiscali.co.uk Tel: 01606 46209

Lach Dennis Parish Council Meetings are held every two months on the second Tuesday in Lach Dennis Village Hall at 7.30pm.

**Next Meetings: Tuesday 8th March
Tuesday 10th May**

If anybody wants to speak in the public *Open Forum* 10 minute session at the Parish Council Meeting please let Theresa Cash, Lach Dennis Parish Clerk know beforehand.

Lach Dennis Parish Council met on Tuesday 11th January 2016. Here's some of the topics discussed. Minutes of Jan 2016 meeting will be available on the Lach Dennis Parish Council Website and will be published in full in the next issue of Village Links.

FRACKING

INEOS have contacted LDPC about shale gas exploration licences. Three blocks for shale gas exploration cover Lach Dennis Parish. More info on shale gas licences a can be found at: <https://decc-edu.maps.arcgis.com/apps/webappviewer/index.html?id=29c31fa4b00248418e545d222e57ddaa>

KEUPER GAS STORAGE PROJECT

LDPC have received details of planned Keuper Gas Storage Project (KGSP) and LDPC will comment by the closing date of 10th February to the Planning Inspectorate. This development is for the construction of

19 gas storage cavities and associated pipework and installation in Lach Dennis Parish and adjacent parishes. As the KGSP is a nationally significant infrastructure project it comes under the National Infrastructure Planning legislation. KGSP (INEOS) have submitted a formal application for development consent to the Planning Inspectorate. The KGSP is in the same area as the existing STORENGY gas storage east of King Street and south of Crowders Lane.

PERMISSIVE FOOTPATH IN LOSTOCK GREEN

LDPC reported that the final signatures of documents authorising the permissive footpath would take place shortly. The permission and conditions of use of the footpath will be clearly displayed. They will include amongst others:

Footpath users must remain on the agreed footpath. Dogs must be on leads.

If the conditions are not adhered to the permission to use the footpath will be withdrawn.

30MPH SPEED RESTRICTION SIGN IN BIRCHES LANE LOSTOCK GREEN

A meeting has been set up with CWAC Highways Department to discuss relocating of the sign.



MINUTES OF THE 220th MEETING OF LACH DENNIS PARISH COUNCIL HELD ON 10TH NOVEMBER, 2015 THE VILLAGE HALL, LACH DENNIS

Present: Councillor Mr. J. Hardman – Chair Councillor Mr. S. Baker Councillor Mr. T. Hargreaves Councillor Mrs. G. Knott Councillor Mr. J. Platt Councillor Mr.P. Richardson **In attendance:** Mrs. T Cash (Clerk to the Council)

Open Forum

Ms. Ros Todhunter spoke regarding the working group on the HS2 project. Cllr. Hargreaves has agreed to attend an organised tour which will consist of a minibus picking up at the Village Hall together with CWAC members. The tour will consist of the stopping points.

Regarding the permissive Footpath, residents were advised that Inovyn has requested a meeting with representatives from the parish Council and we are awaiting further approach from them. Will update at next meeting.

Request for more robust dog signs to be placed near the Play area. Parish Council will consider plastic ones and will obtain quote for the cost.

The Parish Council are aware of several sign posts that have been damaged or have gone missing over the years.

Apologies

Cllr. Mrs. R. Winstanley.

Declarations of Interest

None declared.

Approval of Minutes

Minutes were approved as a true and correct record from last meeting held on 10th November, 2015 and were proposed by Cllr. Platt and seconded by Cllr. Knott. Minutes then signed by Cllr. Hardman.

Matters Arising

The annual cost of producing Village Links was discussed, along with the income from advertisers it generates. CWAC Members budget was previously paid to Lostock Gram Parish Council. Agreed that now it may be sent to Lach Dennis Parish Council and paid over to Ros Todhunter who edits Village Links. The Parish Council will support and also contribute towards one of the quarterly publications as they did last year. The annual cost for Village Links being in the region of £1100. This was proposed by Cllr. Hardman and seconded by Cllr. Hargreaves.

BEESTONS
Lets talk pork

HOG ROAST



Small family run business
with the personal touch

Local sourced pork, with crispy crackling
served on freshly baked baps with
homemade stuffing & apple sauce

* * *

Call for all your catering & entertainment
requirements

* * *

Call Tom: 07753 538998
Email: beestons14@gmail.com
www.beestonscatering.co.uk

The subject of the existing BT telephone kiosk in Lostock Green was discussed in relation to the one in Lach Dennis which has long been 'adopted' by the Parish Council. Kiosk in Lostock Green is not yet decommissioned. The Noticeboard in Lostock Green requires some refurbishment, and a costing and quote will be obtained to have the repair work carried out. Councillors also discussed another update meeting from Essar/OPA, but this is possibly not appropriate at the present time, as activity appears to have ceased for the time being.

Update from last Meeting

The speed sign promised to Lostock Green has now been erected. It was commented from a resident that cars still appear to be speeding, but it was acknowledged these are generally by village residents themselves.

The Christmas Tree in Lach Dennis will be lit on the evening of 1st December. It is hoped the Duke of Portland will be reopened by that time to enable a small celebration for the villages. PC to invite Mark Stocks to light the Tree.

Reports

The recent Annual General Meeting of ChALC was not attended by any Parish Councillor due to other commitments.

Planning Applications

Portford Farm, Common Lane, Lach Dennis extension to existing farm buildings.

Birches Lane, Lostock Green, erection of garage.

Dong Incinerator at Lostock Works.

Comments made by a resident who had attended the open meeting regarding this application. Issues such as the inevitable increase in traffic along Griffiths Road to A556. Further compacted A556 at peak times with heavy traffic vehicles. Noise pollution, environmental issues. Considered the provision of current filter lanes are not meeting needs. Comments will be sent on behalf of the parish Council in the usual way to Planning Department at CWAC.

Orchard Cottage, Holmes Chapel Road, Lach Dennis, extension to garage.

Financial Statement

Balances as at close of business 9th November, 2015 as follows:-

Current account £6553.95

Moneymanager £1250.01

Total £7803.96

Monies owed from Lostock Gram Parish Council due to the boundary changes have now been paid.

Cheques were then presented for signing,

BDO Audit £42.00

Grass cutting £2138.40

Clerks Fee £232.47

It was noted that in previous years, a contribution has been made to Lostock Green Methodist Church for Litter picking. This will be further considered by the Parish Council in view of the two villages having litter picking duties.

Repairs to Lostock Green Noticeboard required.

PC could also be looking at a 50% contribution for a speed reduction initiative which potentially could be in the region of £500-600.

Christmas Tree lighting catering costs in region of £100.

Correspondence – distributed for consideration by Parish Councillors

Date of next Meeting – will be held on Tuesday, 12th January, 2016. 7.30 p.m. at the Village Hall Lach Dennis.

PART B

In accordance with Section 16 of the Local Government Act Public Admittance to Meetings Act 1960, the following agenda items are to be considered in the absence of press and Public. It was moved by Cllr. Hardman and seconded by Cllr. Knott that the meeting proceed into Part B.

Preliminary discussions re Parish Precept

Auditors report.

Date.....

Signed Cllr. J. Hardman Chairman



YOUNG AT HEART LUNCH *Lovely Time Had By All At Lach Dennis*




Lach Dennis Village Hall held their annual Young at Heart Lunch on Sunday 24th January for all residents over 65 years young. It was a great success with 40 seniors enjoying a 3 course meal provided by Jayne Rudd caterers. They were entertained by '2 Nuts on a Bridge' Bryn and Paul and finishing off with a raffle.

The Lach Dennis Village Hall committee raised funds throughout the year to provide this free event for Lach Dennis residents and worked hard on the day to ensure everyone had a lovely time. **Thanks Folks!**



Quality and freshness direct from the grower!



D.J. LOWE & PARTNERS LTD - SHANTY FARM - BYLEY, MIDDLEWICH, CHESHIRE CW10 9NG
Shop Tel. **01606 837775**

WHAT'S ON **LOSTOCK GREEN** DATES FOR THE DIARY

Village Rooms Methodist Church

To hire : kathy@castlecroft-interiors.co.uk

MONDAY Afternoon SOCIAL CLUB
2.00 - 4.00pm

Are you retired? Plenty of time on your hands? Want to socialise? Come and join us. Every Monday afternoon between 2.00 and 4.00 pm. Games of cards and dominoes. A chat and a cuppa. Home-baked cakes and treats. Why not pop in this Monday?

TUESDAY Afternoon 1.00 - 3.00pm
DRAWING AND PAINTING FOR RELAXATION

Join a friendly crowd from L Green, L Dennis and nearby for expert tuition with Mid Cheshire College art tutor Jo. Learn and develop artwork skills using mixed media. Refreshments too. No experience necessary. Provide own materials and equipment.

Course Fee: £80.00 Contact: Mid Cheshire College
01606 74444 www.midchesh.ac.uk

TUESDAY Early evening TAIJI QUAN 6.30 - 7.30pm

On going all year. *Balance – Stability – Concentration – Control* through flowing harmonious movement. An authentic Chinese martial art which can have significant health benefits. It can be very powerful in its effect both physically and mentally because of its emphasis on posture and slow coordinated '*mindful*' movement.

Fees are £50 for a block of 10 classes or £6 pay on the door.

Contact: marymcgregor@waitrose.com 01565 650024 / 07962550545

SPRING BULBS BLOOM IN BIRCHES LANE LOSTOCK GREEN ON 12TH JAN 2016



WEDNESDAY Morning Baby & Toddler Group 10.00 - 12.00

Contact: 01606 40229 rachelthomasprasad@googlemail.com

FRIDAY Morning FLOWER ARRANGING 10.00 – 12.00

Why not come along to the Village Rooms and discover new skills and techniques with fellow flower arrangers?

No experience needed just enthusiasm

Contact : 0784 205 7377 01606 44668

1ST SAT MONTHLY VILLAGE WALK 10.00am

Meet at Lostock Green Methodist Church. Walk to/back Plumley Coffee Morning **Sat 5th March Sat 2nd April**

ALL WELCOME

Lostock Green Methodist Church

Baby & Toddler Group

Refreshments
Activities
Games

wednesdays
fermtime
10.00 - 12.00

LEARN

WHAT'S ON **LACH DENNIS** DATES FOR THE DIARY

Lach Dennis Village Hall
To Hire: www.lachdennis.com
07766 266 180

Weekly Activities
Check Website For Full Details:
www.lachdennis.com

Monday Morning: Bridge
Pilates Yoga
Evening: Puppy Training
Evening: Hardy Plants
Tuesday Morning: Little Superstars
Evening: Country Dancing
Wednesday Morning: Bridge
Pilates Yoga
Wednesday Evening: Ronea Fitness
Thursday Morning: Bridge
Evening: Puppy Training
Evening: Indoor Bowls
Saturday Morning: Little Superstars



Lach Dennis WI
2nd Monday in Month
7.00 - 9.00 pm Tel: 01565 722782

LOSTOCK GREEN AND LACH DENNIS RUBBISH COLLECTION DAYS

February 2016						
S	M	T	W	T	F	S
	1	2	3	4	5	6
7	8	9	10	11	12	13
14	15	16	17	18	19	20
21	22	23	24	25	26	27
28	29					

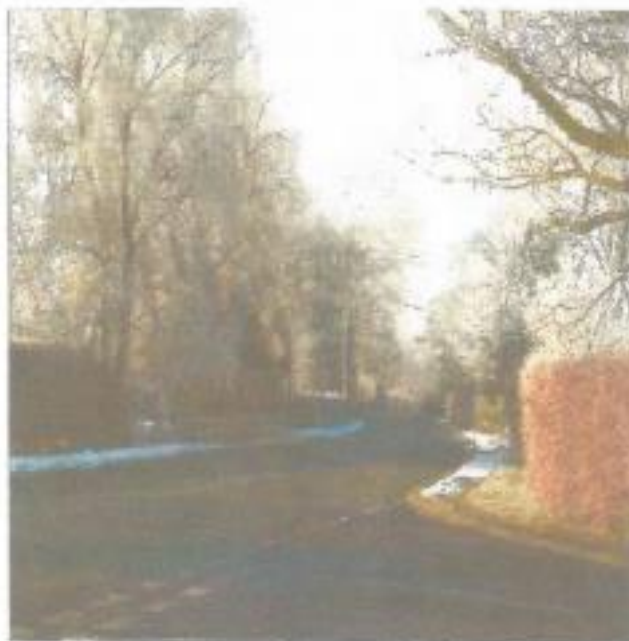
March 2016						
S	M	T	W	T	F	S
		1	2	3	4	5
6	7	8	9	10	11	12
13	14	15	16	17	18	19
20	21	22	23	24	25	26
27	28	29	30	31		

April 2016						
S	M	T	W	T	F	S
					1	2
3	4	5	6	7	8	9
10	11	12	13	14	15	16
17	18	19	20	21	22	23
24	25	26	27	28	29	30

 Please place out your garden waste, brown food bin and recycling boxes
 Please place out your household waste, brown food bin and recycling boxes

Coffee & Chat

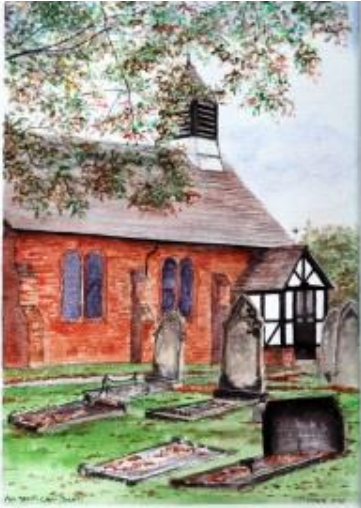
At
Lach Dennis Village Hall
On
Saturday 13th February
10:30-Noon
Home Made Cake Stall
Small Bring & Buy Stall



We are pleased to be able to tell you, that a small profit has been made at our coffee mornings. The residents who attended in December voted to donate some of the profit to two local charities. The sum of £50 was sent to both St Luke's Hospice and Neuro Muscular Centre. Many thanks for your support.

NEWS FROM ALL SAINTS CHURCH LACH DENNIS *Part of the Parish of*

Lostock Gralam and linked with St John the Evangelist Church, Lostock Gralam



Regular Sunday service
All Saints Church: 9.00 am

Selfish Giant Exhibition

A big THANK YOU to everyone who supported the Selfish Giant weekend at St John's Church, Lostock Gralam, in December! The display was spectacular with painted panels, decorated Christmas Trees, a castle

and very impressive giant - all illustrating the story of the Giant who is changed from being mean and selfish to being kind and generous through his encounter with one particular child and, as a result, his garden changes from winter to spring. Hundreds of people enjoyed the display and discovering the story - and a massive total of £1300 was raised by the event to support the work of **The Joshua Tree**, a local charity helping families with children with cancer.

A wonderful Christmas present! Thank you.



Pancake and Quiz Evening

Ash Wednesday, this year on 10th February, marks the beginning of Lent and the Church's preparations for Easter. The day before Ash Wednesday - Shrove Tuesday, 'Pancake Day', when we traditionally use up all the rich and fatty foods we're giving up for Lent! Our usual Pancake and Quiz Evening on Shrove Tuesday, 9th February, in the Church Hall, Lostock Gralam, with pancakes for everyone and a challenging quiz.



Open Church

St John's Church, Lostock Gralam, is open on Tuesday mornings 8.30 am – 12.00 for anyone who would like to pop in for some time of quiet, to think and pray, or for a friendly chat with toast and biscuits and a cup of tea. Whether you'd like some time on your own or a bit of company you will be very welcome.



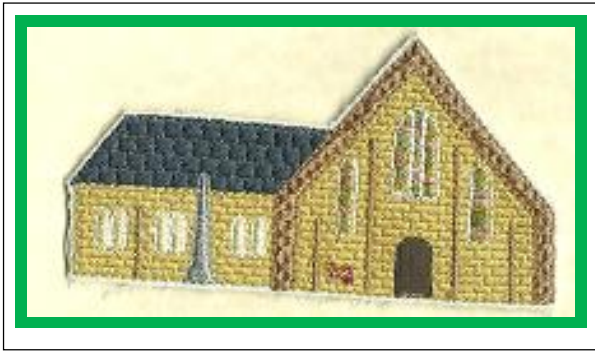
Contact Details

Vicar: Rev. Brian Harris, tel: 01606 43477, email: brian@jbharris.fsnet.co.uk

The Vicarage, Station Road, Lostock Gralam, Northwich, CW9 7PS

Website: www.achurchnearyou.com/lostock-gralam-st-john-the-evangelist

 Follow us on Facebook: 'Lostock Gralam Church'



LOSTOCK GREEN METHODIST CHURCH



Our Mission Statement:

We Aim To Maintain The Church

As A Vital Part Of Lostock Green At The Heart Of Lostock Green

Sunday Weekly Worship

10.30am

Mini Church Once A Month

Village Café Service Once A Month

Minister: Deacon Rachel Thomas-Prasad

Tel: 01606 40229 Email: rachelthomasprasad@googlemail.com

Mini Church Dates: Sunday 21st February Sunday 20th March Sunday 17th April

Much Needed Repairs & Renovations From 14th Feb onwards

The builders are moving in to Lostock Green Methodist Chapel to conduct some much needed repairs.



- Slates, lead flashing and fluting on the roof need replacing and repairing
- The main coping stones are out of alignment and need re-bedding
- The front stained glass window is damaged and letting in water
- Frost damaged bricks need replacing
- The main chapel ceiling is in need of repair, and much of the ceiling and walls need re-plastering.

And when all this is done, there will be redecoration of the main chapel and painting of the outside windows. **All this work does not come cheap - it will cost in excess of £30,000.**

Expect lots of coffee mornings in the year ahead!

The good news is that the Sunday School/Village Rooms will remain open and functioning as usual during the work. So Mums & Toddlers, Tai Chi, Art Classes and the Senior Citizens Club can carry on as normal. Sunday Services will be held in the Sunday School / Village Rooms.

INSURANCE THAT'S ON YOUR DOORSTEP

Having a local office means we're accessible, whether you need to make changes to your policy or make a claim.

We can help you insure your:

- Home & Car
- Horse & Horse box
- Business
- LGV & Commercial Vehicle

For a real conversation about your needs call
01606 737 400 or pop into our branch
NFU Office, Lady Anne Court, Wheelock Street,
Middlewich, Middlewich, CW10 9AG



NFU Mutual
INSURANCE | PENSIONS | INVESTMENTS

It's about time*

YOGA & PILATES CLARE CURTIS BALANCED BODY & MIND

MONDAYS & WEDNESDAYS

PILATES 9.30 - 10.30

YOGA 10.45 - 11.45

LACH DENNIS VILLAGE HALL
HOLMES CHAPEL ROAD, LACH DENNIS,
NORTHWICH. CW9 7SZ

WWW.CLAREYOGAPILATES.COM
07811 657952

RW electrical

Rob Weedall is a professional, friendly, local Lostock Green electrician. Available for all your electrical needs. He offers a wide range of electrical work from security lighting to cookers, shower installations, full and partial rewires, smoke alarms and Home Networks



For advice and a free quote
Contact Rob

07825 290 482 or 01606 837 953

Facebook.com/rw.electrical

Email:

rwelectrical@workmail.com

WHERE DO SANTA'S CHRISTMAS ELVES LIVE? WHY LOSTOCK GREEN OF COURSE!

The Elf Ladies of Lostock Green Judy, Margaret and Annabel (who's just popped off to get her pointy ears fitted) helped Santa in Middlewich. They welcomed children and even a few adults to meet and greet Santa. All in aid of **St Luke's Hospice**. Lots of happy children and lots of money raised for one of our favourite local charities.

If you want to help out at other events Margaret is our local contact for **St Luke's Hospice**. You don't always have to dress as elves – other outfits are available.

Contact Margaret via

birchgrovehomewatch@hotmail.co.uk



Helen Shaves Her Head For Christies

Helen grew up in Lostock Green and with her friend Sheryl went to Lach Dennis Play Group and local schools. Now an officer in the Merchant Navy, Helen tells us:

*'Sheryl and I have been **'hair buddies'** for a long time. When we were both 13 the pair of us cut our own fringes and ended up looking pretty weird indeed - but at least we were weird together.*

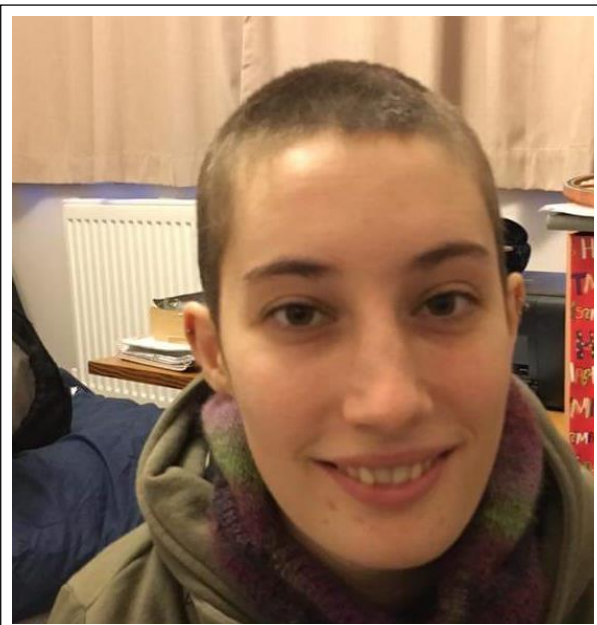
*So when I found out that she would be undergoing chemotherapy I felt it was only right that I honoured our agreement and the true meaning of being **'hair buddies'**.*

That's why I'm asking you guys to sponsor me. I shaved my head on the 1st of January. I've done it so we can raise money for the Christie who are treating Sheryl and people like her. They've already done so much for my family and friends before now and no doubt you all know or will know someone who has been helped by them.

***I hoped to raise £500 and have got over £1000 so far!** Even the smallest donation you can give will be put to good use as the Christie puts 83p out of every £1 donated towards the cause of treating cancer and researching ways of beating it.*

And if that's not enough to persuade you, just remember I joined my ship the day after I shaved my head!

Donate via JustGiving website and type in Hair Buddies



LOSTOCK GREEN HOME WATCH

Homewatch Co-ordinator: birchgrovehomewatch@hotmail.co.uk

Home Watch **VILLAGE** **COFFEE MORNING** **Sat 27th Feb**



10.30 to 12.00

LOSTOCK GREEN METHODIST CHURCH

Everyone in Lostock Green and Lach Dennis are welcome

Come and meet your Home Watch coordinators

And sign up to receive regular updates from Cheshire Police

Come and meet Kelly Mankee, our village Police Community Support Officer

We hope Mark Stocks, our local Cheshire West and Cheshire Councillor will attend

USEFUL CONTACTS

POLICE: Phone 101 to report a crime

Phone 999 in an emergency

- **Local Police Community Support Officer:** Kelly Mankee Answer phone leave a message 0845 458 6391 kelly.mankee@cheshire.pnn.police.uk
- **Lostock Green Home Watch Co-ordinator:** Margaret Weedall 01606 43772 birchgrovehomewatch@hotmail.co.uk
- **Lach Dennis Parish Council Clerk:** lachdennis@tiscali.co.uk
- **Cheshire West and Cheshire Council:** 0300 123 8123 www.cheshirewestandchester.gov.uk
- **CWAC Shakerley Ward Councillor Mark Stock:** 0747 011 8378 mark.stocks@cheshirewestandchester.gov.uk
- **CWAC Streetscene, Littering, Waste Collection:** 0300 123 7038 www.cheshirewestandchester.gov.uk
- **CWAC Dog Warden:** dogs@cheshirewestandchester.gov.uk
- **CWAC Dog Fouling:** 0300 123 7038 www.cheshirewestandchester.gov.uk/contact_us/report-it/dog-fouling-and-remains.aspx
- **CWAC Highways:** 0300 123 7036 www.cheshirewestandchester.gov.uk/residents/transport_and_roads.aspx
- **United Utilities Spotted a leak? Leakline** 0800 330033 www.unitedutilities.com/report-a-leak.aspx
- **INOYVN (INEOS) Enterprises site security team via Lostock Gatehouse:** 01928 517296

What Makes the Locals of Lostock Green **LIVID** And The Bods of Barking and Dagenham **BARKING MAD** **DOG DIRT!!!**

The London Council of Barking and Dagenham aim to wipe out dog mess in their borough by piloting a Dog DNA registration scheme, the first of its type in the country. Council officials will collect samples of dog dirt. If there is a match with the Dog DNA, the owner will receive an advisory note warning of future enforcement activity.

And how is the dog dirt problem being tackled in Lostock Green?

As more and more dog poo appears so do the **Pick Up Your Poo** Notices around the village reminding dog owners of the £1000 fine for not picking up after your dog.

Local Residents Complain to Cheshire West and Chester

The CWAC Dog Warden Services have had a number of emails from local residents and are well aware of the increase in dog fouling in the village. They are actively trying to tackle this problem.

Comments From Local Residents

'On Saturday, we took the 2 grandchildren for a walk towards the bypass. On the pavement there was one sloppy dollop but when we came back, we walked on the opposite side of the road it was disgusting. I couldn't avoid it with the pushchair so had to walk on the road'

'Over the last several weeks the situation has become intolerable. On both sides of the lane, on pavements & grass verges, there is a continuous trail of dog excrement. The pavements are used by villagers, some with pushchairs & others with walking aids. I am a dog owner & am concerned about infections that could be passed onto other dogs.'

It is an offence to allow your dog to foul and not remove it Dog fouling can be reported on the Cheshire West's website under Street Scene, and the council will come out and remove it.

CWAC Dog Fouling: 0300 123 7038
www.cheshirewestandchester.gov.uk/contact_us/report-it/dog-fouling-and-remains.aspx



'After walking the length of Birches Lane with members of CWAC Highways Department we were all aghast at the horrendous dog fouling on the pavements and the grass verges. We have had this problem for a while but that day was particularly bad. Many residents have cleaned the fouling up themselves when it is in front of their houses. We have young mothers with push chairs and elderly residents with walking aids and the situation is unacceptable'

News for Green Fingered Locals

Lostock Green resident, Barbara of Greenside Drive, is a very active member of the Cheshire Gardens Trust, who are undertaking a project about Caldwell's Nurseries which traded from Chelford Road in Knutsford for almost 200 years, only closing in 1992.

CALDWELL'S NURSERIES

EXHIBITION 2nd February – 5th March

Knutsford Heritage Centre

Open Tuesday to Saturday, 11am-4pm Free Admission

Knutsford Heritage Centre, 90a Kings Street, WA16 6ED

T: 01565 650506 E: info@knutsfordheritage.co.uk

W: www.knutsfordheritage.co.uk/

Guided walks: from 2pm to 3pm

Tuesday 16th & Friday 26th February

£5 per person. Groups by arrangement.



The Trust has placed information from surviving business ledgers and oral history recordings as well as photographs and research online at www.caldwellarchives.org.uk/

An exhibition at Knutsford Heritage Centre in February is timed to coincide with publication of a book about the nurseries. So if you are in Knutsford do call in and see this free exhibition.

Knutsford Heritage Centre

2nd Feb to 5th March

The Lost Boys of Lostock



THOSE WHO DIED IN THE
GREAT WAR 1914 — 1918

by John A. Knowles

By John Knowles of Lostock Green

John Knowles' book

The Lost Boys of Lostock has sparked off **Fraser Southern** to tell us about his father's experience in the 1st World War and growing up in Lostock Green in the 1930s Fraser moved away from Lostock Green but not very far and now lives in Lach Dennis

My father **Charles Southern** was born in Lostock Gralam and had 8 brothers. He worked at Mere View Farm, Plckmere, Knutsford as a teamsman until he was 19 years old when he joined the **Royal Garrison Artillery** in May 1916 and served until 1919.

He then served two years in the **Army of Occupation on the Rhine** in Germany. 5 years altogether and was in the **British Army Tug of War Team** and had many

games against the Americans who were very good. He was wounded at one stage and was treated by nuns in a Nunnery and still had shrapnel in his face and neck.

He was demobbed in Whitchurch, Shropshire and walked all the way until half way along King Street when he got a lift on a horse and cart to Lostock Gralam. He had only 2/6 (12.5p) in money and his demob suit. He lived in Lostock Green most of his married life.

I was born in Lostock Green in 1927. When I was a boy there was about 20 or more children to play with and most of us played at **Mr and Mrs Corker's at Robin Hood Farm** on the corner of the By Pass. They were very good to everybody. They had three children we had a great time and went down to the brook for hours. Mr Corker was a milk and potato merchant, we used to sort potato sacks for him. My father told me that Mr Corker was a Prisoner of War in the 1st World War.

When I was about 8 or 9 years old I spent many hours at **George Bells** watching them make coffins. There was another competition for Bells across the road, they were called **Bramhall**. Bells had Mr Bell and 3 sons.

I also spent many hours at **Carters' Park Farm** which is now Fellows.

I remember the **German Bomber** crashing in Lostock Green and 100s of people coming to look, but there was a lot of soldiers guarding it. I now know it was a new type **Junkers 88**.

Also on Lostock Green there was a fruit and vegetable shop with horse and cart which went around Rudheath and Lostock Gralam they also made butter and sold butter milk.

We also had a police man but we still played football on the road and skipping, trundling with bike wheels. **How times have changed.**

Sunday was always Sunday School and many children walked from Lostock Gralam. Sunday School trip was always to Overton Hill.

SPECIAL THANKS TO FRASER FOR SHARING YOUR MEMORIES WITH US

An Update On HS2 From Mid Cheshire Against HS2

Regrettably HS2 is still very much a threat to the businesses, farms, property owners and residents of Cheshire. During a very wet Saturday spent in Northwich recently, this was not however the message we were getting from the people we spoke to, many of whom thought that HS2 had been cancelled!

Unfortunately HS2 has not been cancelled

The confusion may have been caused by the recent announcement by the Department for Transport confirming the route of HS2, **but only as far as Crewe.*** Mid Cheshire Against HS2 have established that the route from Crewe northwards** will not now be announced until the Autumn of this year, some 30 months after the announcement was originally due to be made. This state of flux is causing heartache and worry for many people from Crewe to Lymm, property prices continue to be depressed and farmers & businesses cannot plan for the future.

Mid Cheshire Against HS2 submitted a petition with more than 1800 signatures and following a debate by the full council, **Cheshire West & Chester have set up a 'High Speed Rail, Task & Finish Working Group'** to look at the impact and opportunities of HS2, for the borough. Mid Cheshire Against HS2 are playing an active part in the process, visits were made to farms and communities severely affected by HS2 during a tour made by the working group of all the road crossing points on the currently planned route.

As well as the adverse effect on farms and communities, the working group are particularly interested in the impact on the local economy by HS2 and particularly the conflict between HS2 and other existing and proposed, economically significant projects, including the creation of new salt cavities for gas storage, a project, which even though it is considered to be, 'of national importance', will be cancelled if HS2 is built.

We expect to be advised of the recommendations of the working group in early Spring, when Mid Cheshire Against HS2 will publish a further update.

For more information about Mid Cheshire Against HS2 Please go to our website www.mid-cheshire-against-hs2.co.uk

We are also on Facebook & Twitter.

* HS2 Phase 2A Birmingham to Crewe

** HS2 Phase 2B Crewe to Manchester



Members of Mid Cheshire Against HS2 and the CWAC High Speed Rail, Task and Finish Working Group during their recent tour

HS2 PHASE 2B OR NOT TO BE ? That is the Question.

Club Class

24-7 Cheshire Taxi

01606 46666

Your number one choice for:

Shopping Trips

Nights Out

Airport Transfers (single & returns)

Executive Travel (on request)

Wheelchair Transport

Account & Corporate Bookings

School Runs

4, 5, 6, 7 & 8 Seat Vehicles

Special Events

Train, Boat & Coach Rendezvous

We are Always Open
& Always Happy To Help



VILLAGE LINKS

To Advertise

01606 43772

margaretweedall@hotmail.co.uk

Advert costs

for 4 issues

£20.00 quarter page

£40.00 half page

£80.00 full page

HIRE OF VILLAGE ROOMS

At

Lostock Green
Methodist Church

Available for
birthday parties,
social events,
exhibitions,
coffee mornings,
sales, classes,
quizzes, concerts

£10.00 per hour
Contact Kathleen
Tel 01606 45136

Bowers Threeways Garage Limited

Wincham Avenue, Northwich, Cheshire. CW9 6GB

Telephone: 01606 48454 Fax: 01606 48448

Email: enq@bowersgarage.co.uk

**MOT CLASS 4 & 7
REPAIRS
SERVICING
CARS & COMMERCIALS**



24
HOURS RECOVERY

Celebrating the re-opening of DUKE OF PORTLAND



With the launch of our **NEW MENU** we are offering
20% DISCOUNT off food until Thursday 31st March 2016
Available Monday to Friday between 12.00 - 9.00pm



The Duke of Portland is a beautifully restored country pub in Cheshire nestled between Northwich and Holmes Chapel.

Located just a few minutes from the convenient M6, the Duke of Portland is perfect for a pre/post family meal for those visiting local attractions such as Chester Zoo, Jodrell Bank or Cheshire Oaks.



Open daily from 12:00, this beautiful pub has bags of character, a nice big car park and is serving glorious pub classics utilising the very best of Cheshire produce in comfortable relaxed setting. In the winter we have cosy seating, and come summer, outdoor space for al fresco dining.



The Duke of Portland, Penny's Lane, Lach Dennis, Cheshire. CW9 7SY
www.thedukeofportland.co.uk



T: 01606 46264



Name.....

Email.....

Please tick this box if you would not like to receive information on forthcoming events.

To take advantage of this offer you **MUST** book in advance and bring the completed slip with you.